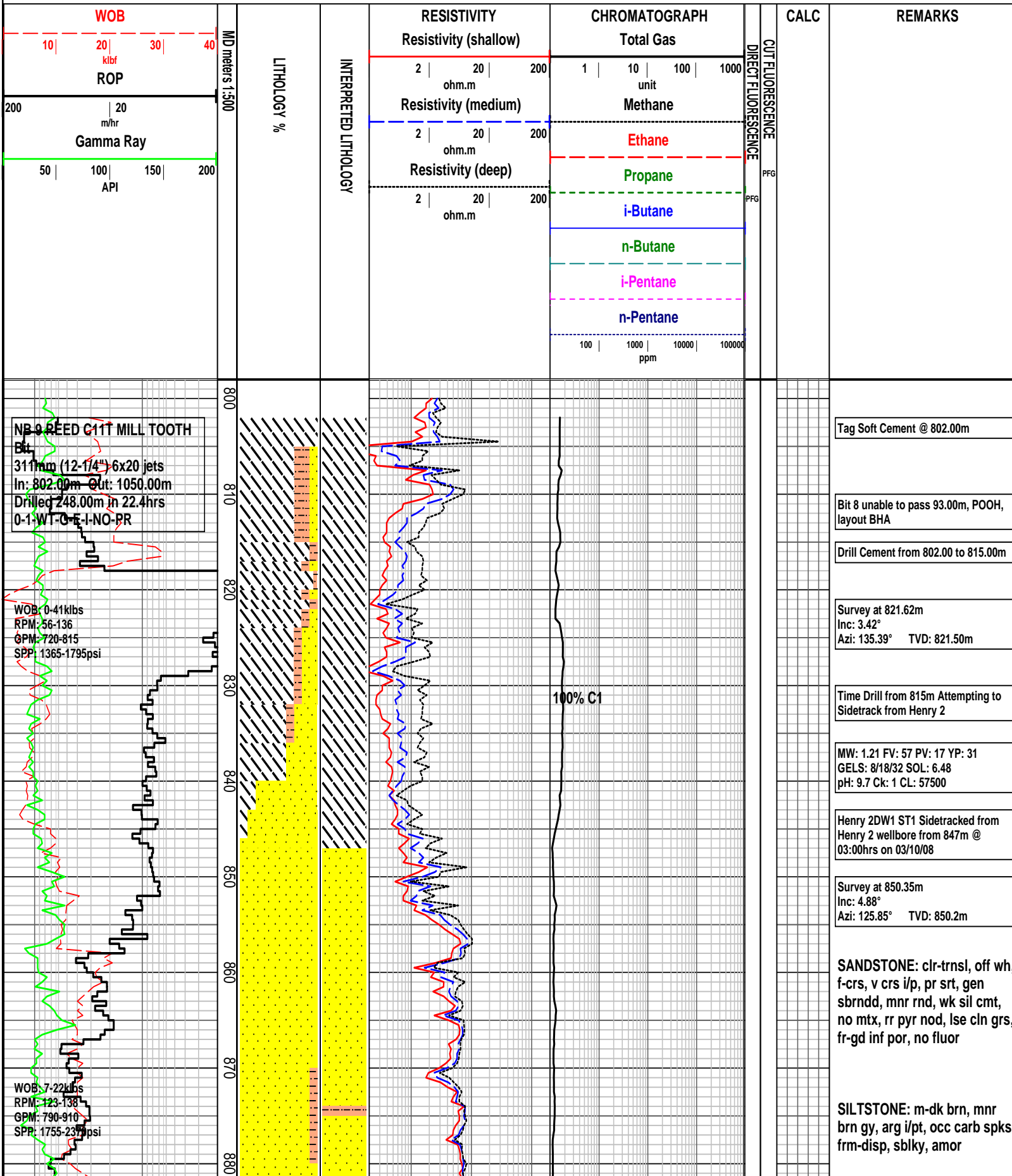


HENRY 2DW1 ST1 FORMATION EVALUATION LOG



NB 9 REED C11T MILL TOOTH
 Bit
 311mm (12-1/4") 6x20 jets
 In: 802.00m Out: 1050.00m
 Drilled 248.00m in 22.4hrs
 0-1-WT-C-E-I-NO-PR

WOB: 0-41kbs
 RPM: 56-136
 GPM: 720-815
 SPP: 1365-1795psi

WOB: 7-22kbs
 RPM: 123-138
 GPM: 790-910
 SPP: 1755-2377psi

Tag Soft Cement @ 802.00m

Bit 8 unable to pass 93.00m, POOH, layout BHA

Drill Cement from 802.00 to 815.00m

Survey at 821.62m
 Inc: 3.42°
 Azi: 135.39° TVD: 821.50m

Time Drill from 815m Attempting to Sidetrack from Henry 2

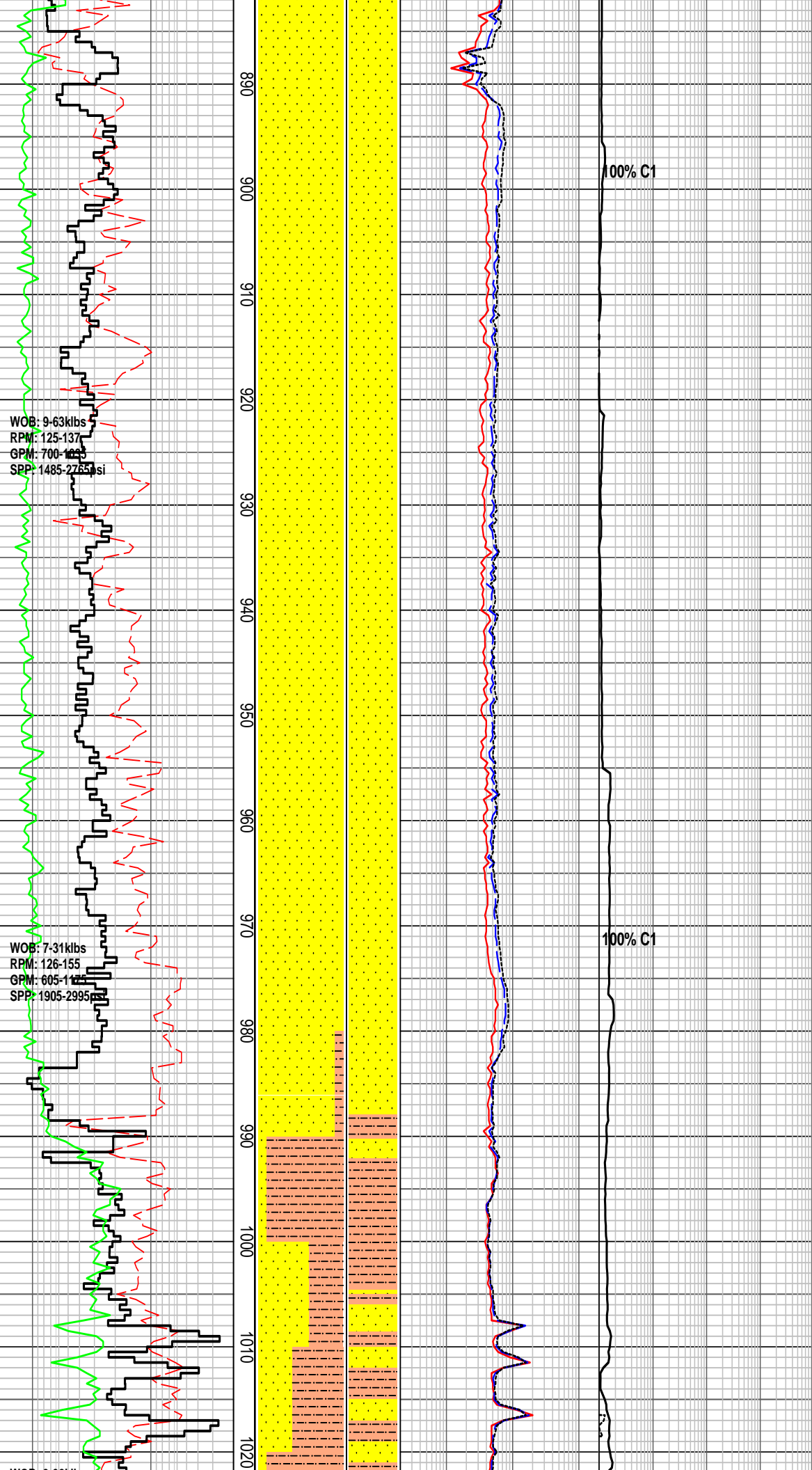
MW: 1.21 FV: 57 PV: 17 YP: 31
 GELS: 8/18/32 SOL: 6.48
 pH: 9.7 Ck: 1 CL: 57500

Henry 2DW1 ST1 Sidetracked from Henry 2 wellbore from 847m @ 03:00hrs on 03/10/08

Survey at 850.35m
 Inc: 4.88°
 Azi: 125.85° TVD: 850.2m

SANDSTONE: clr-trnsl, off wh, f-crs, v crs i/p, pr srt, gen sbrndd, mnr rnd, wk sil cmt, no mtx, rr pyr nod, lse clin grs, fr-gd inf por, no fluor

SILTSTONE: m-dk brn, mnr brn gy, arg i/pt, occ carb spks, frm-disp, sblky, amor



Survey at 878.21m
Inc: 6.34°
Azi: 127.70° TVD: 877.90m

SANDSTONE: clr-trnsl, off wh, m-v crs, pr srt, sbang-dom sbrnrd, wk sil cmt, no mtx, mnr pyr nod, lse cln grs, fr-gd inf por, no fluor

Survey at 909.59m
Inc: 7.84°
Azi: 131.90° TVD: 909.10m

SANDSTONE: pl gy-off wh, clr-trnsl, crs-v crs, mod srt, sbang-sbrnrd, mnr rndd, wk sil cmt, no mtx, mnr pyr nod, lse cln grs, fr-gd inf por, no fluor

Survey at 937.25m
Inc: 10.04°
Azi: 134.30° TVD: 936.40m

SANDSTONE: clr-trnsl, pl gy i/p, f-crs, occ v crs, pr srt, sbang-dom sbrnrd, rndd i/p, wk sil cmt, mnr pl brn arg mtx, mnr pyr nod, tr lit, lse cln grs, fr-gd inf por, no fluor

Survey at 965.21m
Inc: 13.00°
Azi: 131.43° TVD: 963.80m

SANDSTONE: clr-trnsl, f-dom m, crs-v crs i/p, mod srt, sbang-sbrnrd, wk sil cmt, no mtrx, tr liths, lse cln grs, fr-gd inf por, no fluor

Survey at 996.53m
Inc: 15.29°
Azi: 121.48° TVD: 994.10m

SILTSTONE: m-dom dk brn, arg, mnr carb spks, disp v sft, amor, mnr sblky

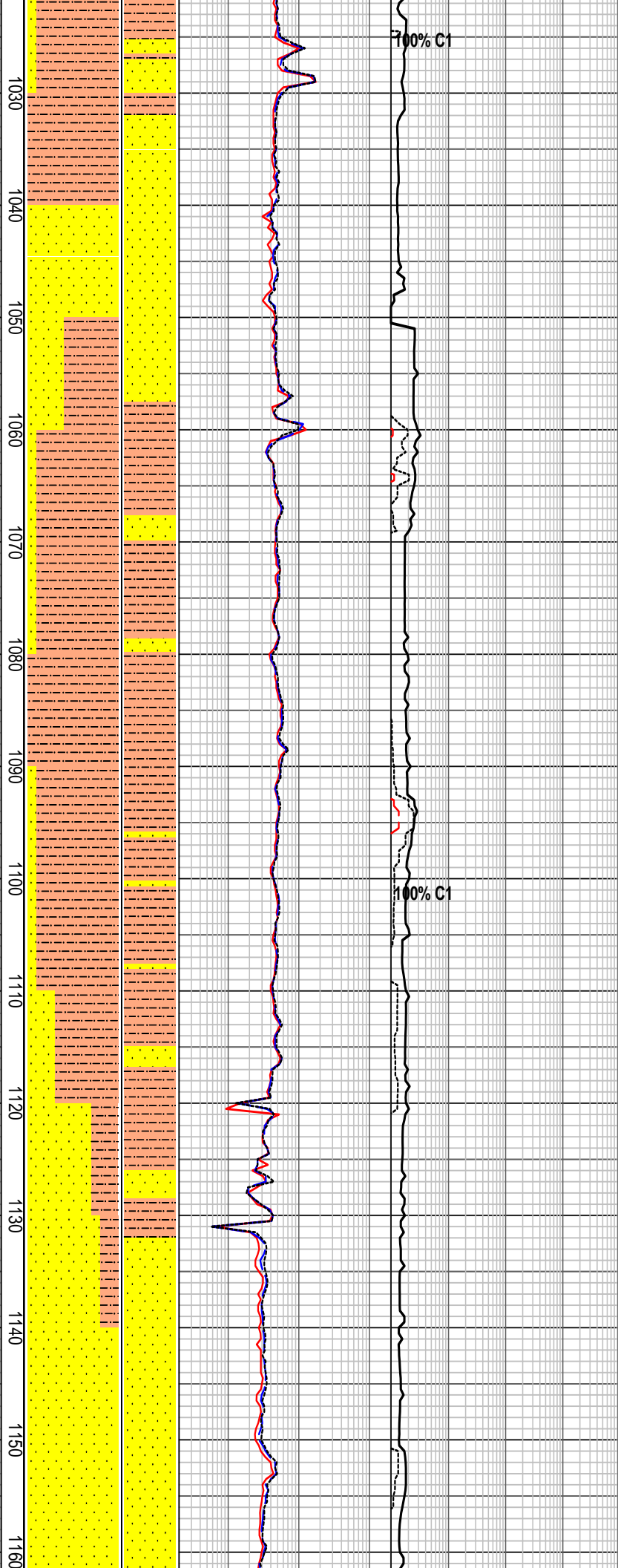
SANDSTONE: clr, trnsl, lt gy, fn-crs gr, pr srt, sbang-pred sbrnrd, wk sil cmt, no mtrx, tr org liths, pred lse, cln qtz grs, fr-gd inf por, no fluor

WOB: 3-32klbs
RPM: 33-155
GPM: 650-995
SPP: 1450-3030psi

04/10/2008
NB 10 REEF SRSX616M-A16 PDC
Bit
311mm (12-1/4") 3x15 3x16 jets
In: 1050.00m Out: xxxx.xxm
Drilled xxx.xxm in xx.xhrs
X-X-XX-X-X-X-XX-XX

WOB: 7-16klbs
RPM: 167-209
GPM: 953-1030
SPP: 2364-2711psi

WOB: 4-15klbs
RPM: 172-206
GPM: 841-1080
SPP: 1923-2870psi



Survey at 1026.43m
Inc: 15.21°
Azi: 119.39° TVD: 1023.00m

SILTSTONE: m brn, m dk brn, arg, mnr carb spks, v sft & disp, amor, mnr sblky

SANDSTONE: clr, trnsl, lt gy, fn-crs gr, pr srt, sbang-pred sbrndd, wk sil cmt, no mtrx, tr orng liths, pred lse, cln qtz grs, fr-gd inf por, no fluor

MW: 1.25 FV: 82 PV: 29 YP: 48
GELS: 11/23/35 SOL: 7.65
pH: 9.2 Ck: 1 CL: 63000

SILTSTONE: m brn, m dk brn, arg, mnr carb spks, sft & disp, amor, mnr sblky

Survey at 1083.00m
Inc: 16.35°
Azi: 122.48° TVD: 1077.30m

SILTSTONE: m-dk brn, arg, tr carb spks, sft & disp, amor, mnr sblky

Survey at 1114.21m
Inc: 17.07°
Azi: 121.75° TVD: 1107.20m

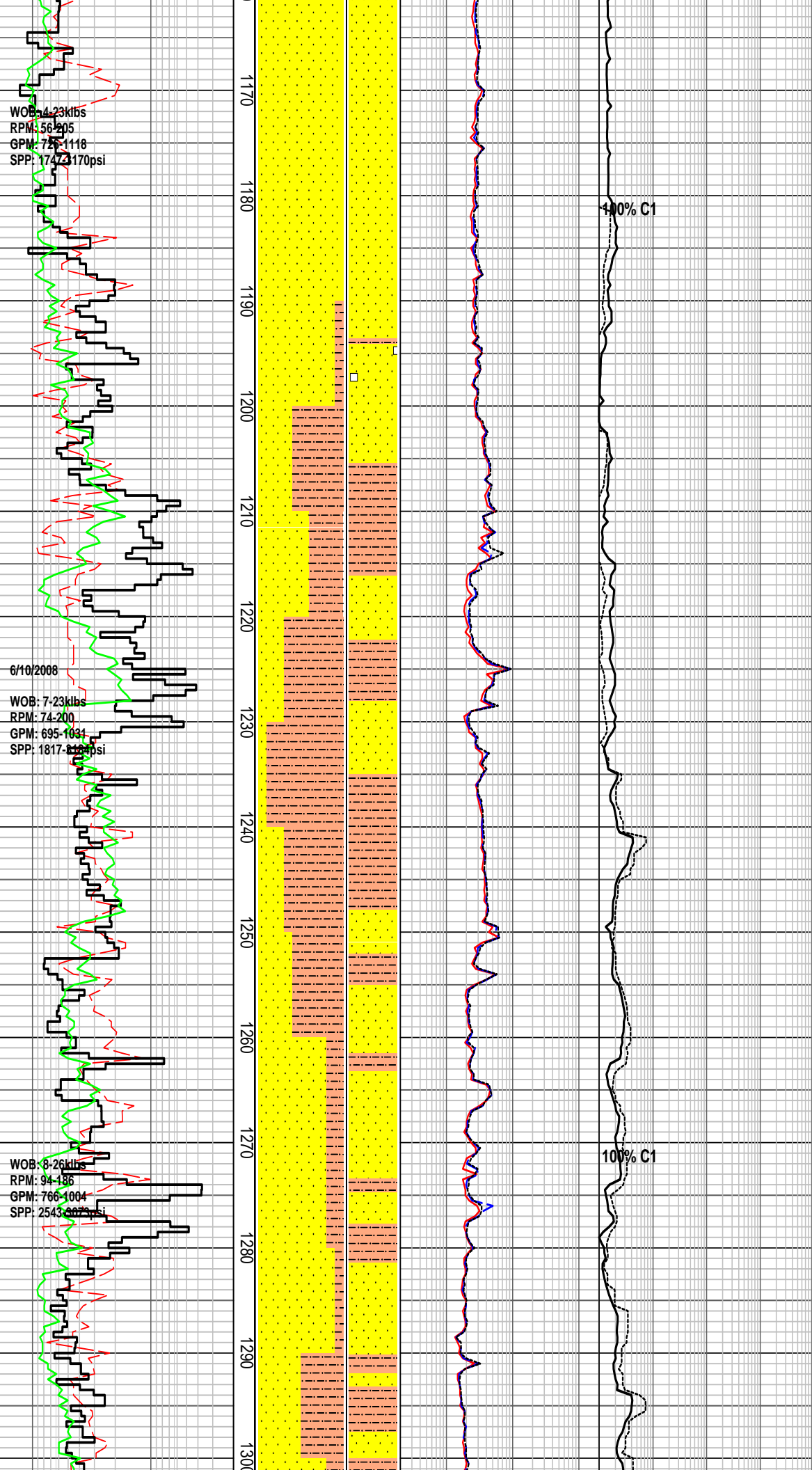
SILTSTONE: m brn, m dk brn, arg, mnr carb spks, sft-frm, disp i/p, sblky

1134-1162m Depth Tracking by Drawworks Sensor

SANDSTONE: lt brnsh gy, off wh, lt gy, grnsh gy, v f-f gr, tr m, mod wl srt, sbang-sbrnd, abd lt brnsh gy arg mtrx, mnr f gr glauc, tr nod pyr, tr carb filks, fri f gr aggs, v pr vis por, no fluor

Survey at 1142.54m
Inc: 18.03°
Azi: 121.60° TVD: 1134.20m

SANDSTONE: trnsl, clr, lt gy, f-pred m-v crs, sbrnd, pr-fr srt, pred lse cln qtz grs, gd inf



WOB: 4.23klbs
 RPM: 56-205
 GPM: 725-1118
 SPP: 1742-1170psi

6/10/2008
 WOB: 7.23klbs
 RPM: 74-200
 GPM: 695-1031
 SPP: 1817-818psi

WOB: 8.26klbs
 RPM: 94-186
 GPM: 766-1004
 SPP: 2543-807psi

SANDSTONE: trnsl, clr, wh, lt gy, f-v crs, pred m gr, sbang-pred sbrndd, pr srt, tr off wh arg mtrx, tr glauc, tr yel Fe stn, tr rd liths, tr carb frags, pred lse cln qtz grs, gd inf por, no fluor

Survey at 1198.96m
 Inc: 18.96°
 Azi: 120.96° TVD: 1187.70m

SANDSTONE: lt brn, lt brnsh gy, off wh, v f-f gr, tr m, mod wl srt, sbang-sbrndd, abd lt brnsh gy arg mtrx, mn f gr glauc, tr nod pyr, tr carb frags, fri f gr aggs, v pr vis por, no fluor

SILTSTONE: m brn gy, m gy, arg, v f aren i/p, tr glauc, tr nod pyr, tr liths, sft-frm, blk-y-sbkly

MW: 1.36 FV: 82 PV: 34 YP: 53
 GELS: 11/19/27 SOL: 11.22
 pH: 9.0 Ck: 1 CL: 63000

Survey at 1224.66m
 Inc: 20.37°
 Azi: 121.46° TVD: 1211.9m

SILTSTONE: pl-occ m brn gy, arg, occ carb spks & frags, v sft-disp, amor, sbkly i/p

SANDSTONE: clr-trnsl, off wh, m-crs, f i/p, pr srt, sbang-sbrndd, wk sil cmt, occ-com off wh arg mtrx, occ carb spks, lse, fri, v pr vis por, pr inf por, no fluor

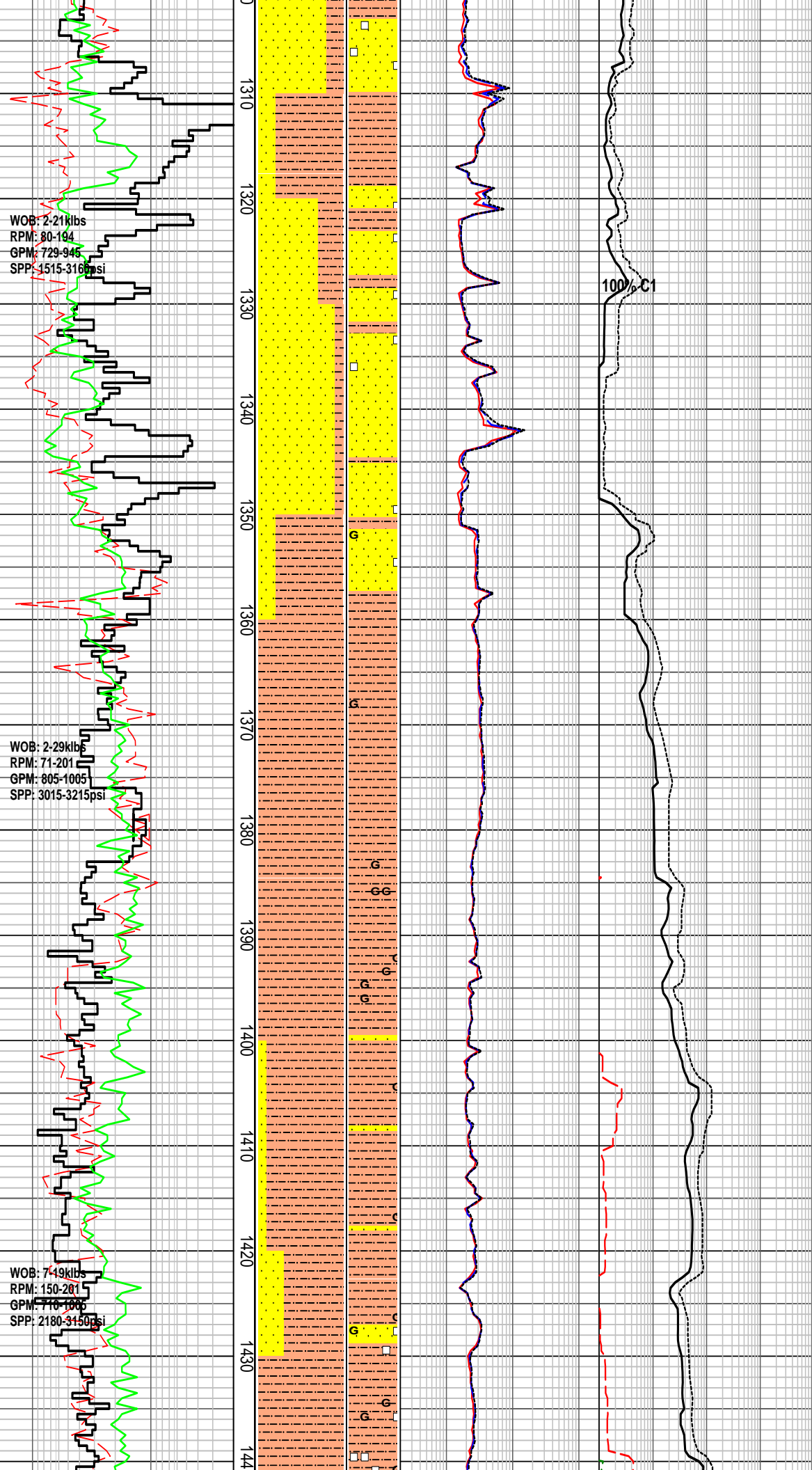
SILTSTONE: pl brn-brn gy, m brn gy i/pt, arg, mn carb spks, rr glauc grs, v sft-disp, amor, rr sbky

Survey at 1255.22m
 Inc: 22.11°
 Azi: 123.50° TVD: 1240.4m

SANDSTONE: clr-trnsl, mn pr gy, m-crs, occ v crs, pr srt, sbang-sbrndd, ang i/p, wk sil cmt, rr off wh arg mtrx, occ pyr nod, gen lse cln grs, mn fri, pr vis por, fr inf por, no fluor

Survey at 1282.52m
 Inc: 24.01°
 Azi: 125.50° TVD: 1265.5m

SILTSTONE: pl-brn gy, arg



SILTSTONE: pl gy-brn gy, arg, occ carb spks, rr glauc grs, v sft-disp, amor, rr sblky

Survey at 1313.59m
Inc: 25.77°
Azi: 126.35° TVD: 1293.7m

SANDSTONE: clr-trnsl, off wh, f-m, rr crs, mod srt, sbang-sbrndd, wk sil cmt, occ off wh arg mtrx, occ-com pyr nod, lse, mnr fri, v pr vis por, pr inf por, no fluor

Survey at 1343.38m
Inc: 27.73°
Azi: 125.39° TVD: 1320.30m

SANDSTONE: clr-trnsl, off wh, f-occ m, rr crs, mod srt, sbang-sbrndd, wk sil cmt, occ off wh arg mtrx, rr pyr nod, lse, mnr fri, v pr vis por, pr inf por, no fluor

Survey at 1372.41m
Inc: 30.44°
Azi: 123.63° TVD: 1345.70m

SILTSTONE: lt-m gy, lt-m brnsh gy, lt grnsh gy, arg, tr carb flks, tr glauc, tr dissem pyr, sft, disp, occ frm, sblky

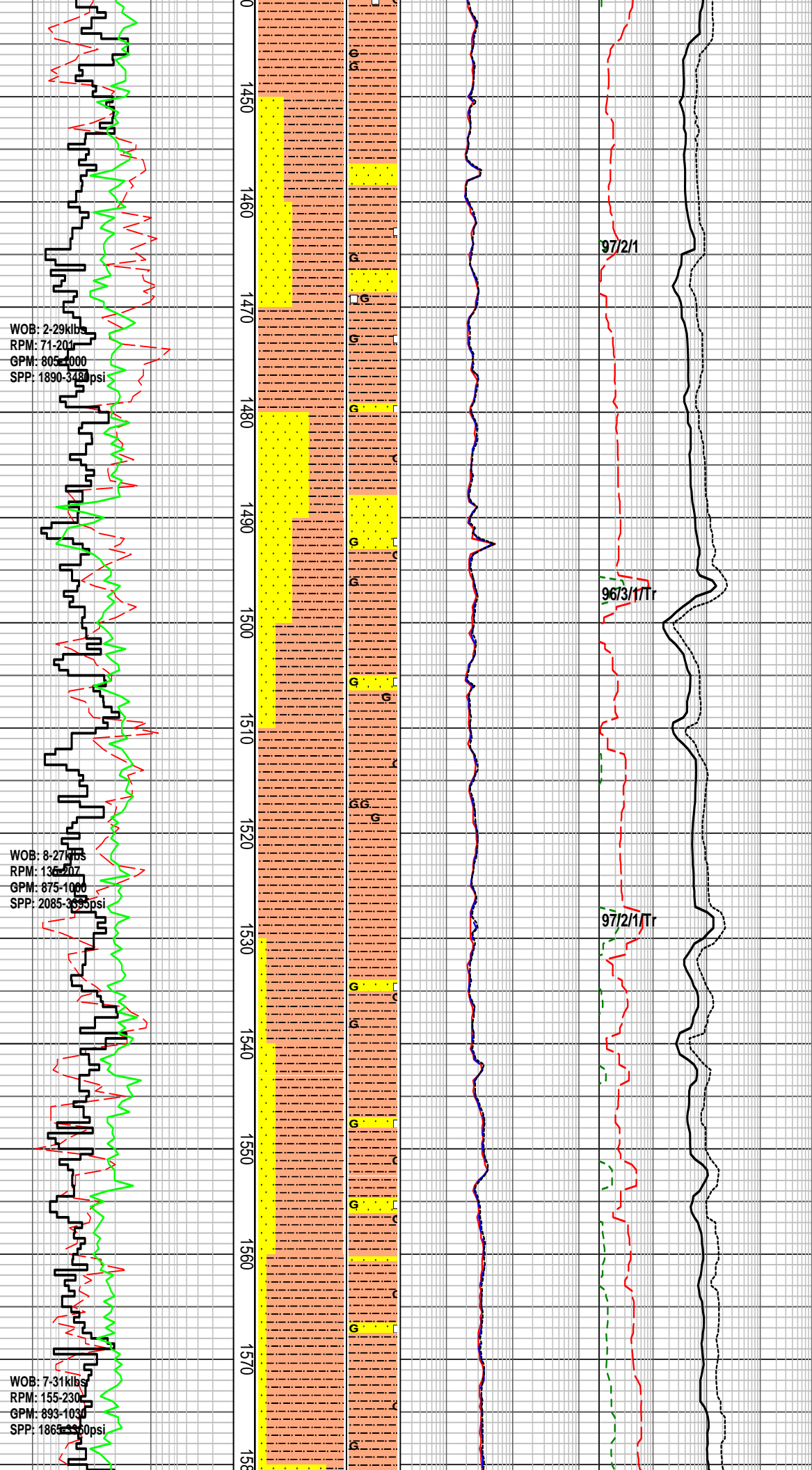
Survey at 1400.56m
Inc: 32.99°
Azi: 122.92° TVD: 1369.60m

SILTSTONE: m brn, lt-m grnsh brn, brn gy, arg, abd glauc, rr carb spks, sft-frm, blk

SANDSTONE: trnsl, clr, off wh, grnsh gy, f-m gr, mod srt, sbrndd, mnr lt gy arg mtrx, mnr glauc, rr nod pyr, lse i/p, pr-fr inf por, no fluor

Survey at 1393.70m
Inc: 35.61°
Azi: 121.93° TVD: 1393.70m

SILTSTONE: m brn, lt-m grnsh brn, brn gy, arg, rr nod pyr, mnr glauc, rr carb spks,



sft-frm, blk

SANDSTONE: trnsl, clr, off wh, grnsh gy, f-m gr, tr crs, mod srt, sbrndd, mnr lt gy arg mtrx, mnr glauc, rr nod pyr, lse i/p, pr-fr inf por, no fluor

Survey at 1459.39m
 Inc: 38.28°
 Azi: 120.99° TVD: 1417.40m

SILTSTONE: m brnsh gy, v f aren, rr f gr glauc, mnr nod pyr, tr carb spks, sft-frm, blk

SANDSTONE: trnsl, clr, off wh, lt gy, grnsh gy, f-crs gr, pr srt, sbang-sbrndd, com brnsh gy arg mtrx in f gr aggs, lse m-crs grs, pr-fr inf por, no fluor

SILTSTONE: lt-m brn, brnsh gy, arg, rr glauc, rr carb spks, sft-frm, blk

Survey at 1517.02m
 Inc: 43.20°
 Azi: 120.19° TVD: 1461.00m

SILTSTONE: lt-m brn, brnsh gy, arg, rr glauc, rr carb spks, sft-frm, blk

Survey at 1546.81m
 Inc: 45.86°
 Azi: 121.16° TVD: 1482.30m

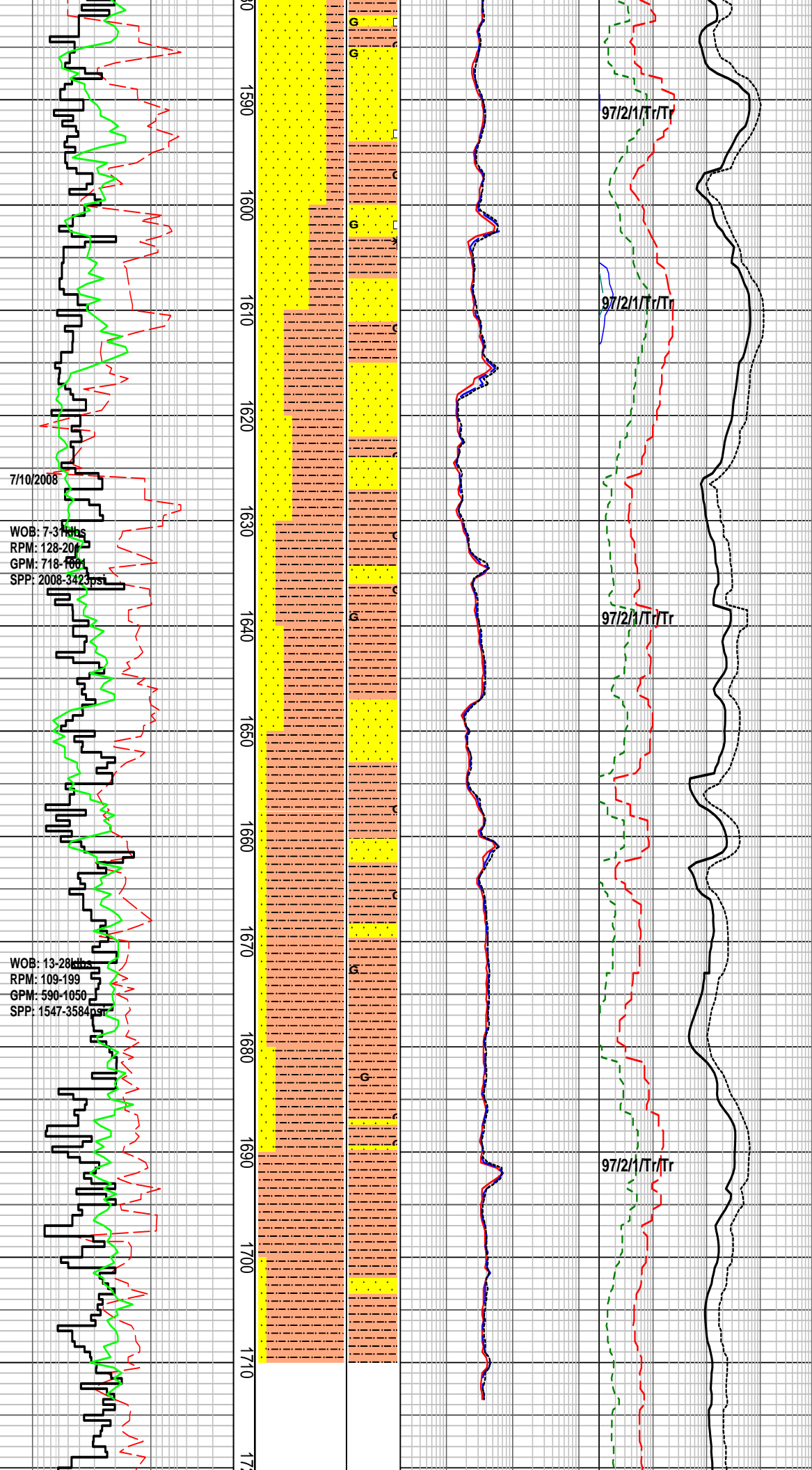
SANDSTONE: trnsl, clr, off wh, lt gy, f-m gr, fr srt, sbang-sbrndd, com brnsh gy arg mtrx, rr glauc, fri aggs, pr inf por, no fluor

Survey at 1575.26m
 Inc: 47.86°
 Azi: 121.84° TVD: 1501.70m

WOB: 2-29klb
 RPM: 71-204
 GPM: 805-1000
 SPP: 1890-3480psi

WOB: 8-27klb
 RPM: 136-207
 GPM: 875-1000
 SPP: 2085-3690psi

WOB: 7-31klb
 RPM: 155-230
 GPM: 893-1036
 SPP: 1863-3560psi



SANDSTONE: trnsl, clr, off wh, lt gy, f-m gr, fr srt, sbang-sbrndd, com brnsh gy arg mtrx, rr glauc, fri aggs, pr inf por, no fluor

Survey at 1604.83m
 Inc: 49.87°
 Azi: 120.74° TVD: 1521.2m

MW: 1.38 FV: 77 PV: 39 YP: 58
 GELS: 12/25/30 SOL: 12.37
 pH: 8.4 Ck: 0.5 CL: 56000

SILTSTONE: pl gy, pl-m brn gy, arg, mnr glauc grs, occ carb spks, v sft-disp, amor, mnr sbiky

Survey at 1631.03m
 Inc: 51.38°
 Azi: 119.97° TVD: 1537.8m

SANDSTONE: clr-trnsl, off wh, f, occ v f-f, wl srt, sbang-sbrndd, wk calc cmt, occ off wh arg mtrx, mnr liths, gen lse cln grs, mnr fri, pr-v pr vis por, pr inf por, no fluor

Survey at 1659.42m
 Inc: 52.99°
 Azi: 120.24° TVD: 1555.2m

SILTSTONE: pl brn, m brn i/p, arg, rr glauc grs, occ-com carb spks, rr micmic, v sft-disp, amor, mnr sbiky

Survey at 1687.79m
 Inc: 54.14°
 Azi: 121.36° TVD: 1572.1m

SANDSTONE: off wh, v f, wl srt, sbang-sbrndd, wk calc cmt, com off wh arg mtrx, mnr carb spks, fri, v pr vis por, no fluor

7/10/2008
 WOB: 7-3 fths
 RPM: 128-20
 GPM: 718-100
 SPP: 2008-3423 psi

WOB: 13-28 fths
 RPM: 109-199
 GPM: 590-1050
 SPP: 1547-3584 psi

